



**English  
Language  
Company**

*Sydney – Australia*

*[elc.edu.au](http://elc.edu.au)*



***English made easy***





*English  
Language  
Company*

## ***Welcome to ELC***

Living and studying in another country can be a life-changing and unforgettable experience. So, choosing where to study is a big decision. To help you make the right choice here are just some reasons why students choose ELC to help them succeed in their studies or careers.



LIVE IN ONE OF  
THE BEST CITIES  
IN THE WORLD



04



STUDY AT  
AUSTRALIA'S  
MOST AWARDED  
ENGLISH SCHOOL



05

English  
Language  
Company



YOUR ELC  
EXPERIENCE



*Great learning environment  
Excellent teachers  
Fantastic nationality mix*

06

ENGLISH MADE  
EASY



*Customised courses  
Collaborative learning  
Interesting classes*

08

YOUR AUSTRALIAN  
EXPERIENCE



*Busy social activities program  
Travel advice and bookings  
Student experience team*

10



CHOOSE YOUR  
NEW HOME



*Modern apartment living  
Australian family life  
Shared student houses*

12

14

WE CAN HELP YOU  
FIND WORK



*Working holidays  
Internships  
Student jobs*



16

CHOOSE THE  
RIGHT COURSE  
FOR YOU



*Wide range of courses & electives  
Day and evening timetables  
Free activities, clubs & workshops*

# Live in one of the best cities in the world

Sydney is consistently rated as one of the world's best destinations for international students.



Sharon Keller, Switzerland

*"Sydney is an amazing city and has a lot to offer. I loved strolling around Darling Harbour which was only 5 minutes away from ELC and to enjoy the gorgeous beaches at the weekend. I participated in many events organised by ELC, which gave me a unique opportunity to meet people from all over the world and to explore the city."*

## Live in sunny Sydney

Sydney is the largest and most cosmopolitan city in Australia but it's also beautiful, safe and clean. It has a lively city centre and great nightlife. Sydney is a large city but you can go surfing, scuba-diving, bushwalking or just relax on the beach – all within the Sydney metropolitan area. Very importantly, our students always find the people very friendly and welcoming.

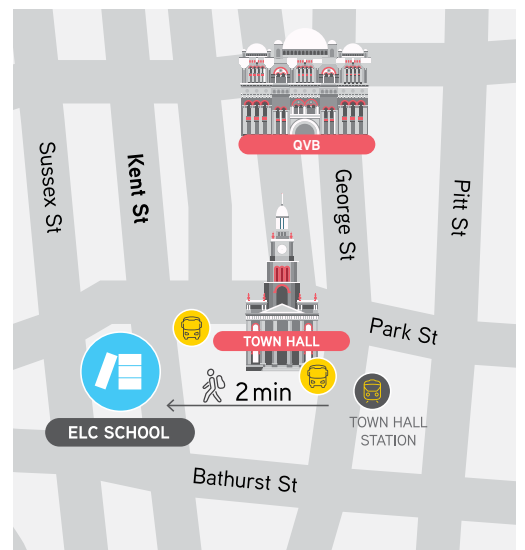
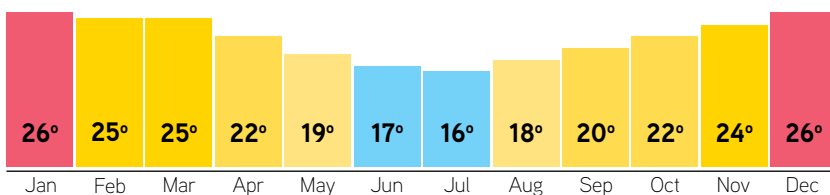
The climate is great with hot summers and mild winters so it's easy to enjoy the outdoors.

## Study in the heart of the city

You'll be studying right in the city centre:

- > 4-minute walk from Sydney's premier shopping centre
- > 2-minute walk from the main train station
- > 5-minute walk from Darling Harbour
- > 5-minutes by train to the Opera House
- > 10-minute walk to ELC Premium Apartment and Studyhouse
- > Close to city centre cafes and cinemas

## What's the weather like?





# Study at Australia's most awarded English school

STM Lifetime Super Star Award – Southern Hemisphere



## Multi award-winning English school

ELC won the prestigious award “STM Star Language School Southern Hemisphere” 5 times between 2007 and 2013, making us a “Lifetime Super Star” and the best in Australia.

In 2014 and 2015 ELC won the ASEAN Masterclass award for outstanding English language school in the region.



## Accredited & quality assured

We're fully-accredited by the Australian government and quality-endorsed so you can be confident that you will receive the very best education and service.



EXCELLENT  
TEACHING AND  
INTERESTING  
LESSONS



FANTASTIC  
NATIONALITY MIX  
AND FRIENDS  
FROM AROUND THE  
WORLD



OUR STUDENT  
EXPERIENCE TEAM  
WILL ENSURE  
YOU HAVE A  
GREAT TIME



COMFORTABLE  
STUDENT  
LOUNGES AND  
GREAT LEARNING  
ENVIRONMENT



# Your ELC experience



*ELC is owned and operated by teachers, so we know what it takes to make a great school - engaging courses; excellent teachers; personal attention and lots of activities to choose from! All of this shared with students from around the world and delivered by people who are passionate about what they do. ELC is a fun school that is serious about learning!*

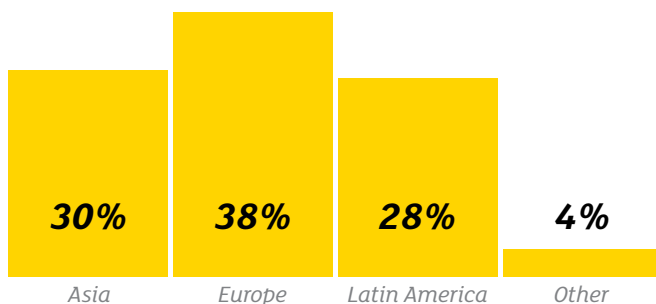
## Learn in a great environment

Comfortable, well-equipped classrooms and collaborative learning spaces create an effective learning environment. Our unique eat, meet and speak spaces are the perfect places to break out and use your English.

- > 24 bright and large well-equipped classrooms
- > 2 comfortable student common rooms
- > Chill spaces for quiet learning, reading or relaxing
- > Kitchen and dining area
- > Study centre
- > Information and travel desks
- > Free WiFi

## Fantastic nationality mix

ELC students come from over 50 countries so you will have to speak English to communicate and it'll be easy to make lifelong friends from around the world.



Average nationality mix of daytime classes.



## Excellent teachers

Our students consistently rate ELC teachers as excellent. All teachers are qualified and experienced with university degrees and specialist TESOL qualifications.

They will deliver lessons that are engaging and fun and relevant to your daily life. They'll also make sure that you get personal attention in class and through tutorials to make sure that you make maximum progress in your English.

## Student support

ELC has dedicated professional and friendly staff who are there to support you and ensure you have the best experience possible.

They can help you with academic matters but also your accommodation, transport, medical care, travel or just general everyday life in Sydney.





# English made easy



*Studying abroad is a once in a lifetime opportunity for you to accelerate your learning and progress to the level you want to achieve. It may seem difficult, but it's our job to make it easy! So how do we do it?*

## **The right level for you**

On your first day at ELC you'll take a placement test and have a spoken interview so we can place you in the class that's right for you. You'll then choose your elective classes which are also streamed by level.

## **Our methodology**

You will have many opportunities to communicate throughout the lesson with your teacher and classmates. Your teacher will use a variety of approaches to present and practise language and skills in real-world contexts.

## **Collaborative learning**

Our classrooms and learning spaces have been specifically designed to facilitate communication and comfort and give you variety in your learning day.

## **Learning and technology**

Lessons are all face-to-face but teachers use the latest digital resources to ensure that your lessons are varied, up-to-date and dynamic.

## **Fast pace, maximum progress**

Our classes are intensive but it's the whole experience that will ensure that your English improves a lot in a short time. Speaking English all day, taking part in our activities around Sydney, socialising with your classmates will all assist your progress. Every Monday you will take a short progress test to revise and assess what you have studied.

## **Customised courses**

We offer a range of major English courses which are complemented by your choice of electives so that you can learn exactly what you need. Choose your core course when you enrol and then the electives once you are at ELC. It's easy!

## **Optional activities, clubs and clinics**

Our special interest classes, activities and clubs each week are the perfect opportunity to do the things that interest you most and which are the most relevant to you.

## **Coursebook to keep**

On the first day of your new class and if you change course or level, you'll be given a coursebook to keep. We think that it is important that classes follow a coursebook to give their program structure and for you to use as a reference in the future.

## **Small classes**

We have small classes so that you can get the attention you need. Our maximum class size is 15 students with an average of 13.

## **Study plans**

Longer-term students draw up a plan of study with our senior teachers. We discuss your goals and help you plan your route to achieving them, including which electives and English Extras to choose as well as any external examinations. You'll also have regular tutorials with your class teacher to discuss your progress and review your study plan.

## **Certificates and level records**

Your ELC certificate is a record of your course and level of English upon completion that you can show to prospective employers or higher education institutes.

# Your Australian experience



*Outside of class time, you'll be immersed in English and have the chance to make new friends, do amazing things and discover Australian life. Our dedicated student experience team are here to help you achieve this. From organising parties to arranging onward travel we'll connect you with the things you enjoy and introduce you to a whole range of new people and experiences.*



## Discover Sydney

### SOCIAL, CULTURAL AND SPORTING ACTIVITIES

Every week ELC students meet after school for our new student welcome drinks. This is a great opportunity to get to know your classmates. Then every week and weekend we organize great things for you to do to ensure that you make the most of your time with ELC!

- > Museums, exhibitions and galleries
- > Beach barbecues
- > Parties and bars
- > Sightseeing trips
- > Weekend excursions
- > Soccer, beach volleyball, surfing

## Explore Australia

### TRAVEL DESK

Australia is a fantastic place to travel with amazing sights and experiences, good accommodation and transport. Check out our travel desk at school and gather information on the best places to go and book your trips and tours at exclusive prices. Or come along to our free presentations on Australia's best destinations.

## Find yourself

### STUDENT EXPERIENCE TEAM

Always wanted to learn to surf? Love to try scuba-diving? Keep up your soccer skills. Take up yoga. Volunteer your time. Let our student experience team know what you're interested in and we'll connect you to the clubs, places, classes and people to make it happen.



*Beach and barbeques*



*Parties & nightlife*



*Weekend excursions*



*Australian culture*



*Sports & outdoor activities*





**Premium Apartment**  
 QUALITY  
 MODERN LIVING  
 SPACES FOR  
 STUDENTS

←



**Student Houses**  
 SHARE A HOUSE  
 WITH OTHER  
 STUDENTS

←  
 →



**Homestay**  
 LIVE AND  
 LEARN WITH AN  
 AUSTRALIAN  
 FAMILY

←

**Hostel**  
 CONVENIENT  
 LOCATION  
 AND FUN  
 ENVIRONMENT

→



# Choose your new home



We have a choice of quality accommodation to suit your preferences and budget. All of our accommodation options will give you a comfortable and safe environment where you can feel at home.

## Homestay

Stay with one of our friendly families and you will experience typical Australian life.

- > Carefully selected families, with a genuine desire to welcome you
- > Comfortable and clean homes
- > Close to public transport
- > Fully-furnished single room
- > Breakfast and dinner are shared with the family (also lunch at the weekend)

## ELC Premium Apartment

Live in a single room with private bathroom, inside one of our premium apartments within a large student residence close to ELC.

- > Located in the city, only a 10-minute walk to school
- > Large communal social area, computer lounge, outdoor area, laundry and 24/7 reception
- > The apartment is shared by 6 ELC students
- > Fully-furnished and equipped, air conditioning and internet access
- > Large, bright single room with private bathroom

## Student Houses

Share a modern house with other international students in a convenient location.

- > Modern houses, well-equipped and comfortable
- > Conveniently located, either close to public transport or walking distance to the school
- > Single, twin or triple rooms with your own desk and wardrobe
- > Share the living and kitchen areas and bathrooms with other students
- > TV, laundry and free WiFi

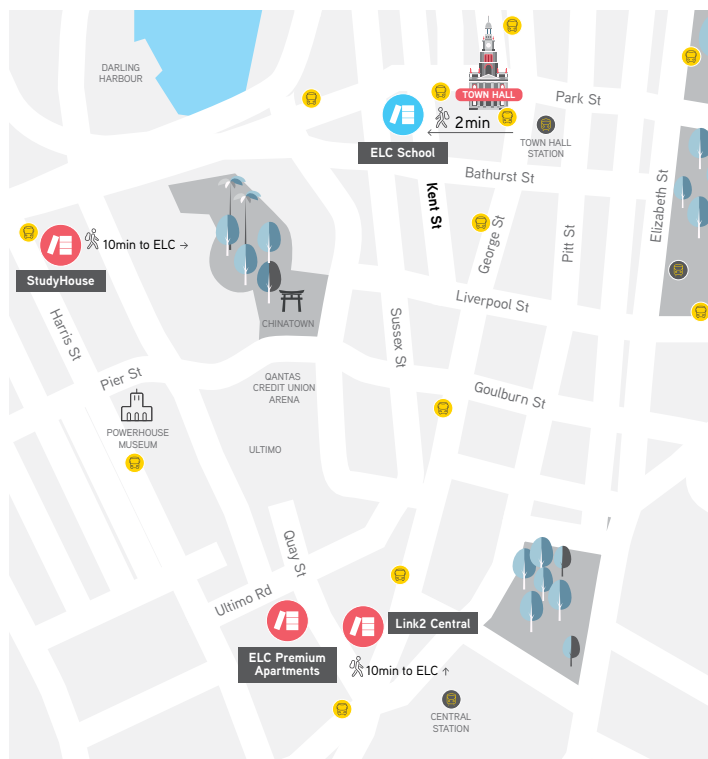
See our website to choose the house and room type that will best suit you.

## Glebe Hostel

Share hostel accommodation close to the school with international students and travellers.

- > 10-minute bus journey to ELC
- > Near Sydney University
- > Clean and comfortable with good facilities
- > Single, twin or 4-bed rooms
- > Laundry, kitchen, TV lounge, internet café, study room

For more photos and full details of our accommodation visit [www.elc.edu.au](http://www.elc.edu.au)



**Airport  
Welcome**

We can arrange to meet you at the airport and take you to your accommodation.

# We can help you find work



Whether you want to work your way around Australia, find part-time work in Sydney or improve your future career opportunities we have a work program that will suit you.

## Why students who want to work and study choose ELC

1. Our city centre location (opposite the main train station) makes it easy for you to travel between work and school.
2. Our day and evening schedules are timed to allow day students to finish in time to go to work and evening students to travel from work to school.
3. Our SWAP program is available to all students for free when you start at the school and our work coordinator is always available to advise you.
4. You can sign up to our student job database on arrival for a small extra fee and get access to current job vacancies.



### Did you know that in Australia:

- > Student visa-holders can work for up to 40 hours per fortnight.
- > Working holiday visa-holders can work part-time while studying or full-time after their course for the duration of their visa.

## Student Work Assistance Program (SWAP)

We provide a free service to help you find casual work if you have a student or working holiday visa.

### WORK ORIENTATION

When you start at ELC we will help you to:

- > Open a bank account
- > Apply for your tax file number
- > Choose a mobile phone plan
- > Prepare your resume
- > Learn how to apply for a job
- > Find out about work available

### WORK SUPPORT

See our work coordinator to:

- > Have your resume checked
- > Get help completing an application form
- > Enquire about tax
- > Receive advice on a contract or pay

### WORK PREPARATION

If you are looking for work in Australia, we strongly recommend that you join our free Work Ready classes.

You may also need to take some one-day Work Ready courses to gain relevant practical skills, including:

- > Coffee culture
- > Bar skills
- > Wait staff skills
- > RSA certificate

These are organised by our local training partners and can be booked when you arrive at ELC.

## Student Job Database

We have teamed up with the provider of Australia's largest database of casual jobs to provide a job alert service for ELC students. Create a profile and resume online, receive information about work available to suit your timetable and skills and apply online.

**Fee payable at ELC after arrival.**



GREAT PROGRAM IF YOU ARE ON A WORKING HOLIDAY VISA



WORKING HOLIDAY OR 416 SPECIAL PROGRAM VISA OPPORTUNITIES



GET INVOLVED IN OUR VOLUNTEERING PROGRAM



## Work and Travel Program

This program offers you a comprehensive package of services to meet all of your needs as a working holiday visitor to Australia.

### Membership includes

- > Pre-arrival information handbook
- > Orientation with dedicated staff
- > Job service: unlimited access to a database of paid jobs in resorts, hotels, restaurants, bars, farms, factories, etc., all over Australia
- > Tax file number application lodged
- > Australian bank account pre-opened
- > Sim Card
- > Unlimited internet access
- > Free admin services, including photocopying and printing
- > Private mailbox with mail forwarding services anywhere in Australia
- > Weekly travel information seminars
- > Advice from experts on transport, accommodation, taxes, superannuation, and safety in Australia
- > Toll-free 24/7 emergency assistance number

### Requirements

- > Minimum strong intermediate level of spoken English
- > Working holiday visa
- > Must be booked before you leave home

## Professional Internship

A professional internship in Australia will help you to develop the skills and knowledge required for success in your career.

### You will

- > Gain valuable experience within your field
- > Develop English skills essential for the global workplace
- > Improve your career opportunities
- > Internationalise your resume

### Internships are available in

- > Architecture
- > Banking
- > Engineering
- > Graphic design
- > Tourism
- > Information technology
- > Marketing
- > Media
- > Plus many more

### Requirements

- > Minimum upper-intermediate level of English
- > Working holiday or eligibility for 416 Special Program visa
- > Some previous study and/or experience for most internship fields
- > Must be booked before you leave home

## Conservation Volunteering

With our conservation volunteering program you will discover Australia, take part in exciting conservation projects to protect and preserve our beautiful environment and work with participants from all over the world.

### You will

- > Learn practical conservation skills
- > Visit places tourists don't normally see, including remote areas
- > Have the chance to make a volunteer contribution, earn references and certificates

### Projects may include

- > Protection and restoration of native plant habitats
- > Tree planting
- > Wildlife surveys
- > Walking trail construction
- > Seed collection
- > Conservation fencing
- > Heritage restoration

### Requirements

- > Minimum pre-intermediate level of English
- > Be aged between 18–70 and have a reasonable level of fitness
- > No specific visa requirements
- > Must be booked before you leave home

# Choose the right course for you



*There are four main course types for you to choose from when you enrol, depending on your main purpose in learning English. However, if you want to switch courses once you're studying with us you usually can, providing you have the right level. Students who study with us for a longer period of time usually combine a number of courses in our academic semester or year programs.*

## **Included in all courses**

- > Coursebook
- > Weekly progress tests
- > Tutorials
- > Certificate of completion & record of level

## **1. General English**

- > improve your communication skills and fluency
- > improve your English for a wide range of purposes like travel and work
- > improve your general all-round English before you specialise

## **2. Academic English or IELTS**

- > prepare for the demands of university or college studies in English
- > access one of our pathways to higher education in Australia
- > prepare for the IELTS examination for university entry

## **3. Cambridge Exam Preparation Courses**

- > gain an internationally recognised qualification in English
- > do a high level, very thorough exam course

## **4. General + Business English**

- > use English effectively in an international workplace
- > improve your English for business studies
- > gain an advantage in your career



## Course level guidelines

CEFR	GENERAL ENGLISH COURSE	CAMBRIDGE ESOL	GENERAL + BUSINESS ENGLISH	ACADEMIC ENGLISH	IELTS	WHAT YOU CAN DO WITH EACH LEVEL OF ENGLISH
<b>C2</b>	↑ 6 <b>Proficient</b>	CPE				> Enter most undergraduate & postgraduate degrees
<b>C1</b>	↑ 5 <b>Advanced</b>	CAE	GE + Business 3	Academic English 2B	IELTS 2 6.0+	> Enter many undergraduate & postgraduate degrees > Work professionally in English
<b>B2</b>	↑ 4 <b>Upper Intermediate</b>	FCE	GE + Business 2	Academic English 2A	IELTS 1 5.5+	> Enter some undergraduate & diploma courses > Do an internship in English > Use English confidently in the workplace
<b>B1</b>	↑ 3 <b>Intermediate</b>	PET	GE + Business 1	Academic English 1		> Vocational & academic preparation courses > Use limited English at work
<b>A2</b>	↑ 2 <b>Pre-intermediate</b>					
<b>A1</b>	↑ 1 <b>Elementary</b>					

↑ 12 weeks  
Each level takes approximately 12 weeks of full-time study to complete.

## Timetables

### DAY CLASSES

Our day classes are our most popular option for students enrolling from overseas. They offer full immersion and the chance to engage with other students throughout the day, to have full access to school services and to participate in our English Extras classes and social activities. Depending on your level you will follow one of these day timetables:

#### Mon-Fri

8.30am – 3.15pm  
9.15am – 4.15pm  
9.30am – 4.15pm

All classes have one hour for lunch and two short breaks.

### EVENING CLASSES

Evening classes are a popular choice with students who are working during the day. Our city centre location, directly opposite the train station, makes it easy for students to travel between work and school. Evening students do not attend English Extras.

#### Mon-Fri

5.00pm – 9.20pm (with one 20-minute break)

### Sample Timetable (day classes)

	MONDAY	TUESDAY	WEDNESDAY	THURSDAY	FRIDAY
<b>MAJOR Course</b> General English Lesson 1	<b>Listening &amp; vocabulary</b> Recounting an experience	<b>Speaking</b> Talking about experience <b>Natural phrases</b> Adding emphasis	<b>Grammar</b> Modifying and intensifying adverbs <b>Pronunciation</b> Expressing emotions and emphasising	<b>Vocabulary</b> Phrases with 'get'	<b>Extended speaking &amp; listening</b> Exchanging holiday stories Speaking feedback
	Break	Break	Break	Break	Break
<b>MAJOR Course</b> General English Lesson 2	<b>Grammar</b> Narrative tenses & preparation for speaking	<b>Reading &amp; vocabulary</b> 'A test of endurance'	<b>Speaking &amp; listening</b> Showing interest and expressing surprise	<b>Writing</b> Journal/Blog writing (narrative tense practice)	<b>Weekly test</b>
	Lunch Break	Lunch Break	Lunch Break	Lunch Break	Lunch Break
<b>Special Focus Module</b> Business English	<b>Vocabulary &amp; listening</b> Project Management	<b>Speaking skills</b> Updating colleagues on a project	<b>Vocabulary &amp; reading</b> Company case study	<b>Writing</b> Preparing a progress report	<b>Speaking skills</b> Responding to questions & suggestions
	Break	Break	Break	Break	Break
<b>English Extras</b>	Your choice of English Extra classes				

# 3 easy steps to customise your course



Our aim is to enable you to study, work and travel anywhere in the world with fluent English as your ticket. But we understand that no two students are the same. People have different reasons for learning English and have different learning styles and interests. So, to make sure you achieve your learning goals we have developed a unique study system which allows you to customise your course to suit your own needs, goals and preferences.



For students who need to improve their English very quickly because they only have a short time in Australia or have exams approaching, we suggest our Premium course options. These combine the benefits of a communicative group class with the intensity of 1:1 lessons.

## SPECIAL FOCUS MODULES

Full-time students choose from our range of Special Focus Modules. Depending on your level and course, choices include:

### COMMUNICATION SKILLS

#### **Speaking, Listening & Vocabulary (SLV)**

This popular intensive conversation skills class will help you make fast progress with your speaking skills.

#### **Real English**

This class teaches you to use English effectively for everyday tasks in Australia, such as shopping, banking and using public transport.

### WORK SKILLS

#### **Business English**

This class is for students who work or would like to work in a company where a good level

of spoken or written English is required. Lessons focus on practical English skills for the international workplace as well as specialist vocabulary for a range of industries and professions.

### ACADEMIC SKILLS

#### **English for further studies**

You'll focus on the skills you need to study at university or college in English including presentations and assignments.

### CORE SKILLS

#### **Writing Skills**

Learn how to write effective letters, emails, reports and essays

– a useful class for students who will do further studies or who need English for work.

#### **Grammar**

Improve your accuracy and learn how to express yourself in more complex ways.

### EXAM SKILLS

#### **IELTS Testbuster**

Learn tips for IELTS exam success; complete practice tests and tasks with feedback and target your strengths and weaknesses for exam success.

#### **Cambridge Testbuster**

Learn tips for each paper of your Cambridge exam; complete

practice tests and tasks with feedback and target your strengths and weaknesses to excel in your exam.

#### **Cambridge Writing Skills**

This is for students who especially need to focus on their writing skills for the FCE, CAE or CPE exams.

#### **Cambridge Grammar & Vocabulary**

This course is for exam students who need to improve their grammar and vocabulary.

#### **Cambridge Speaking and Listening**

This module focusses on the skills needed to do well in the speaking test and listening exam.

Visit [www.elc.edu.au](http://www.elc.edu.au) to see the levels required for each Special Focus Module

## ENGLISH EXTRAS

We offer a great range of workshops, activities and classes for 1 hour each day for all full-time day students. These classes give you the chance to personalise your course, choosing the classes that you need or which interest you the most.

Example weekly schedule

MONDAY	TUESDAY	WEDNESDAY	THURSDAY	FRIDAY
Pronunciation	Work Ready	Sport	Australian Studies	Pronunciation
Conversation	Anecdote	Excursion	Conversation	Film English
Soft Skills	Exam Reading	Exam Listening	Exam Speaking	Presentations
Guided Independent Study				

### AUSTRALIAN STUDIES

Learn about Australian culture, history, music and travel.

### WORK READY

Get ready to work in Australia. Prepare your resume, practise job interviews and learn useful language for work.

### ANECDOTE

These listening & speaking lessons are based around short videos of English speakers talking about an everyday topic.

### CONVERSATION

Practise speaking in a relaxed environment with a different topic every class.

### FILM ENGLISH

Based around short interesting videos, these lessons will help you improve your listening and vocabulary skills.

### PRESENTATIONS

These workshops focus on essential skills to deliver presentations at work or university.

### SOFT SKILLS

These clinics focus on a different workplace skill each week such as negotiations, presentations and participation in meetings.

### GUIDED INDEPENDENT STUDY

Study independently in our well-resourced learning centre with the guidance and support of a teacher.

### PRONUNCIATION

Learn how to make your English sound natural.

### EXCURSIONS

Each week we visit a place of interest around Sydney with the guidance of an ELC teacher.

### EXAM SKILLS CLINICS

Advice and practice to perfect your skills for each paper of your chosen exam – IELTS or Cambridge.

### SPORT

Join other students in our range of sporting activities.



# General English

*Learn to communicate effectively and speak English with confidence*

General English classes focus on improving all aspects of your English and in particular your communication skills, fluency and confidence.

## 1. Intensive General English

This is our popular full-time course which allows you to improve your all-round English combined with areas of individual focus according to your needs, strengths and weaknesses.

DAY	15hrs GENERAL ENGLISH	+	5hrs SPECIAL FOCUS MODULE	+	5hrs ENGLISH EXTRAS
EVENING	16hrs GENERAL ENGLISH	+	4hrs SPECIAL FOCUS MODULE		

## 2. Semi-Intensive General English\*

This part-time course is ideal for students who want to study in the mornings and have afternoons free to explore Sydney.

\*Not available to student-visa holders

DAY	15hrs GENERAL ENGLISH
-----	--------------------------

## 3. Premium English

This course is ideal for students who need to make very fast progress in a short time. It combines group study of General English with one-to-one lessons individually designed for you as well as your choice of English Extras.

DAY	15hrs GENERAL ENGLISH	+	5hrs ONE-TO-ONE LESSONS	+	5hrs ENGLISH EXTRAS
-----	--------------------------	---	----------------------------	---	------------------------

For a full list of Special Focus Modules and English Extras see page 19.

You will make fast progress in:

- > Everyday communication
- > Fluency
- > Pronunciation
- > Vocabulary
- > Grammar
- > Listening
- > Reading
- > Writing

START DATES	COURSE LENGTH
Any Monday	2-52 weeks
TIMETABLES	CLASS SIZE
Day and evening courses	Max 15 (average 13) Premium English includes 1:1 lessons

COURSE LEVELS
6 levels of General English from elementary to advanced



# General + Business English

*Develop your skills for the global workplace*

This course is designed for students who need to use English effectively in both general and business environments. Gain a competitive advantage in your career and increase your employment prospects.

## 1. General + Business English

This course is ideal for students who wish to improve their all-round English combined with a specific focus on business.

DAY	15hrs GENERAL ENGLISH	+	5hrs BUSINESS ENGLISH	+	5hrs ENGLISH EXTRAS

## 2. Premium English for Business

This course allows you to combine group and individual classes and customise your program. The one-to-one lessons are an ideal option for students who have very specific professional needs. One-to-one classes are tailored to your profession and industry.

DAY	15hrs GENERAL ENGLISH	+	5hrs BUSINESS ENGLISH	+	5hrs ONE-TO-ONE LESSONS

*Business English class includes:*

- › Daily workplace language
- › Written business communication
- › Business vocabulary
- › Spoken communication at work
- › Essential soft skills

For more course details visit [www.elc.edu.au](http://www.elc.edu.au)

START DATES	COURSE LENGTH
Any Monday	2–36 weeks
TIMETABLES	CLASS SIZE
Day courses	Max 15 (average 13) Premium English includes 1:1 lessons
COURSES LEVELS	
Intermediate to advanced	

# Cambridge Exam Preparation

*Achieve an internationally recognised qualification from Cambridge English*

Cambridge English qualifications can help you to gain entrance to university, improve your job prospects and provide evidence of your English for employers. Our preparation courses will enable you to make progress in your all-round English ability whilst developing skills and techniques for exam success.

DAY	15hrs CAMBRIDGE EXAM PREP.	+	5hrs SPECIAL FOCUS MODULE	+	5hrs ENGLISH EXTRAS
EVENING	16hrs CAMBRIDGE EXAM PREP.	+	4hrs SPECIAL FOCUS MODULE		

## SPECIAL FOCUS MODULES FOR CAMBRIDGE STUDENTS

Our Special Focus Modules teach and practise the skills needed to do well in the exam.

- > Cambridge Speaking & Listening
- > Cambridge Writing skills
- > Cambridge Grammar & Vocabulary
- > Cambridge Testbuster: This is our intensive exam tips and practice class.

For our day students we also offer a remedial Cambridge module to give extra support to students who have not done as well as expected in their practice exams. Free optional exam skills workshops are also offered, including our popular Cambridge Speaking Extra which provides intensive speaking exam practice.



Authorised Centre

## Cambridge Test Centre

ELC is an approved Cambridge ESOL Computer-Based Test Centre so you will get to take your test online in familiar, comfortable surroundings.

## Free Cambridge Getaway

Join your teacher and Cambridge classmates on our beautiful day excursion included in your course fees.



## COURSE FEATURES

- > Our Cambridge teachers have completed our ELC Cambridge Teacher Development Program
- > Cambridge coursebook
- > Personalised study plan and regular tutorials
- > Online and paper-based exam practice
- > Regular progress tests and 2 mock exams
- > Free Cambridge exam skills workshops every week (day courses)
- > Additional support if you need it

## You will improve your:

- > Examination skills
- > Fluency and pronunciation
- > Grammar and vocabulary
- > Writing skills
- > Listening and reading skills

START DATES	COURSE LENGTH
Fixed start dates (see our website)	9 to 12 weeks depending on exam and start date
TIMETABLES	CLASS SIZE
PET, FCE and CAE: Day and evening courses; CPE: Day course only	Max 15 (average 13)
COURSES LEVELS	
PET, FCE, CAE and CPE	



# IELTS Exam Preparation

*Get the score you need!*

This course prepares students for their IELTS examination as well as improving language and skills for academic study. Your improvement in reading, listening, writing and speaking skills as well as your improved range and accuracy of grammar and vocabulary will be reflected in your exam results.

EVENING

**16hrs**

IELTS PREPARATION



**4hrs**

SPECIAL FOCUS MODULE

## SPECIAL FOCUS MODULES FOR IELTS STUDENTS

Choose Special Focus Modules which provide you with practice in academic skills for your further studies or do intensive exam practice.

- > Business English
- > English for Further Studies
- > Writing
- > Grammar
- > IELTS Testbuster

Day course students who wish to do some IELTS preparation can choose our General or Academic English course and combine this with an IELTS elective in the afternoons.

## Academic counselling

If you haven't decided yet what degree or diploma course you would like to do, our academic counsellor will be happy to provide you with all the information you need to make the right decision and will also assist you with your application.



*You will improve your:*

- > IELTS exam skills and techniques
- > Academic vocabulary and grammar
- > Academic reading and writing skills
- > Listening skills for IELTS and for academic lectures
- > Speaking skills for IELTS and fluency in academic contexts

START DATES	COURSE LENGTH
Every Monday	2-36 weeks
TIMETABLES	CLASS SIZE
Evening course only	Max 15 (average 13)
COURSES LEVELS	
Each level usually requires 12 weeks to complete. IELTS 1: Entry level IELTS 5.5 IELTS 2: Entry level IELTS 6.0	



# Academic English

*Excel in your university or college studies*

This course is the best preparation for students wishing to study in English at an Australian university or college. The course blends IELTS preparation and important academic skills. Whether you want to gain entry to your course via one of ELC's direct entry agreements or by taking the IELTS examination, this program will ensure you are ready to succeed.

## 1. Intensive Academic English

This is our popular full-time day course, which allows you to improve your academic English skills and prepare for study and exams. It combines a focussed academic morning class with the chance to choose from our range of Special Focus Modules in the afternoons (including IELTS preparation).

DAY	15hrs ACADEMIC ENGLISH	+	5hrs SPECIAL FOCUS MODULE	+	5hrs ENGLISH EXTRAS
EVENING	16hrs ACADEMIC ENGLISH	+	4hrs SPECIAL FOCUS MODULE		

## 2. Premium Academic English

This option is ideal if you need to prepare very intensively and need individual support in specific skills or language areas. It combines group study with one-to-one lessons designed to fulfil your specific needs.

DAY	15hrs ACADEMIC ENGLISH	+	5hrs SPECIAL FOCUS MODULE	+	5hrs ONE-TO-ONE LESSONS
-----	---------------------------	---	------------------------------	---	----------------------------

### SPECIAL FOCUS MODULES FOR ACADEMIC ENGLISH

Choose Special Focus Modules which provide you with further practice in the academic skills you need.

> IELTS Testbuster > Grammar > Business English > Writing skills > English for Further Studies  
We also have a range of academic workshops offered in our English Extras program for you to choose from each week.

### You will improve your:

- > Speaking skills for tutorials and presentations
- > Academic vocabulary and grammar
- > Academic reading and listening skills
- > Academic writing skills
- > Listening skills for lectures
- > IELTS exam preparation and techniques
- > Research skills
- > Presentations

START DATES	COURSE LENGTH
Any Monday	5–40 weeks
TIMETABLES	CLASS SIZE
Day course only	Max 15 (average 13) Premium courses include 1:1 lessons

COURSES LEVELS
Intermediate to advanced. Each level usually requires 10 weeks to complete.

IELTS >	Entry Level	Exit Level
Academic English 1A	5.0	5.5
Academic English 2A	5.5	6.0
Academic English 2B	6.0	6.5+





# Academic pathways

All higher and tertiary education institutions in Australia require international students to meet English requirements, usually by showing an IELTS test score. However, ELC also has agreements with many major universities and colleges who allow our students to enter directly into certificate, diploma, graduate and postgraduate programs without an IELTS test, providing you have successfully completed our Academic English course at the appropriate level. For a full list of our pathway partners please see our website.



Jin Soo Lee, South Korea

ACADEMIC ENGLISH	
<p><b>Direct Entry Stream</b> <b>Compulsory Assessment</b></p> <p>Written assignments, academic presentations and final test</p>	<p><b>IELTS Stream</b> <b>Non-compulsory Assessment</b></p> <p>IELTS reading, writing, listening and speaking exam preparation</p>
<b>Direct Entry</b>	<b>IELTS Exam</b>
Further Studies	
<p>Students may enter one of our partner institutions with a successful Academic English course result. See full list at <a href="http://www.elc.edu.au">www.elc.edu.au</a></p>	<p>Students take the IELTS test to enter their chosen higher education institution</p>
<p><b>DIRECT ENTRY STUDENTS IN ACADEMIC ENGLISH</b></p> <p>To be awarded an Academic English certificate and gain direct entry into one of our pathway institutions, you must successfully complete a minimum of 10 weeks of classwork and assignments and complete all progress tests and a final test.</p>	<p><b>IELTS STUDENTS IN ACADEMIC ENGLISH</b></p> <p>The Academic English course will prepare you to take your IELTS exam in Australia as well as improve your academic skills. The course incorporates regular IELTS exam preparation and practice. Assignments are not compulsory (unlike our direct entry pathway) but are recommended.</p>

*"When I first came to Australia I couldn't understand or speak English. I have made a lot of improvement here at ELC and the Academic English course I am currently doing has really helped me improve my formal English and business vocabulary. I have one year left at university and this course will really help me with my university course as it focuses a lot not just on communication skills but also areas like report writing, essay writing and presentations."*

# Academic Semester or Year abroad

*Be amazed at what you can achieve!*

Study at ELC for a full semester or academic year and improve your English significantly. You'll achieve fluency and accuracy and be well-prepared to achieve your academic and professional goals. Tailor your academic semester or year to your own needs and interests and your learning and living experience will truly be unique.

## ELC Academic Semester/Year program:

### 36 weeks or 48 weeks

Combine your choice of courses (depending on your entry level). Most academic semester students start their studies with General English to make rapid progress in their all-round English. They then move on to specialise in academic, business or exam studies. Semester or academic year students at the right level usually take at least one international English exam in this time.

### Personalised Study Plan

During the first week of your course, you'll meet your academic advisor to plan your course of study. They will help you choose electives, enrol you in exams or recommend what you can do outside of class to improve your English. Every 12 weeks (or see them sooner if you want) you'll meet your advisor to readjust your plan and make sure that you are on target to achieve your goals.

### Includes:

- > Combination of courses
- > Personalised study plan
- > Personal academic advisor
- > Wide choice of special focus modules, activities and clubs
- > Become a student ambassador
- > Academic Semester/Year certificate

## Student Experience Support

Our dedicated Student Experience Coordinator meets all academic semester/year students individually to find out what you are interested in seeing, doing and achieving in Australia. We'll help you to join a local sports club, find a conversation buddy, volunteer your time or do whatever it is that you'd love to do.

### Student ambassadors

Our academic semester/year students have the chance to become ELC student ambassadors. This means that they orientate and support new students, have the chance to participate in some paid activities for free and represent the school to visitors. This a great chance to refine your communication skills, enhance your resume for employment and get an Ambassador Certificate from ELC. It's also a fun thing to take part in!



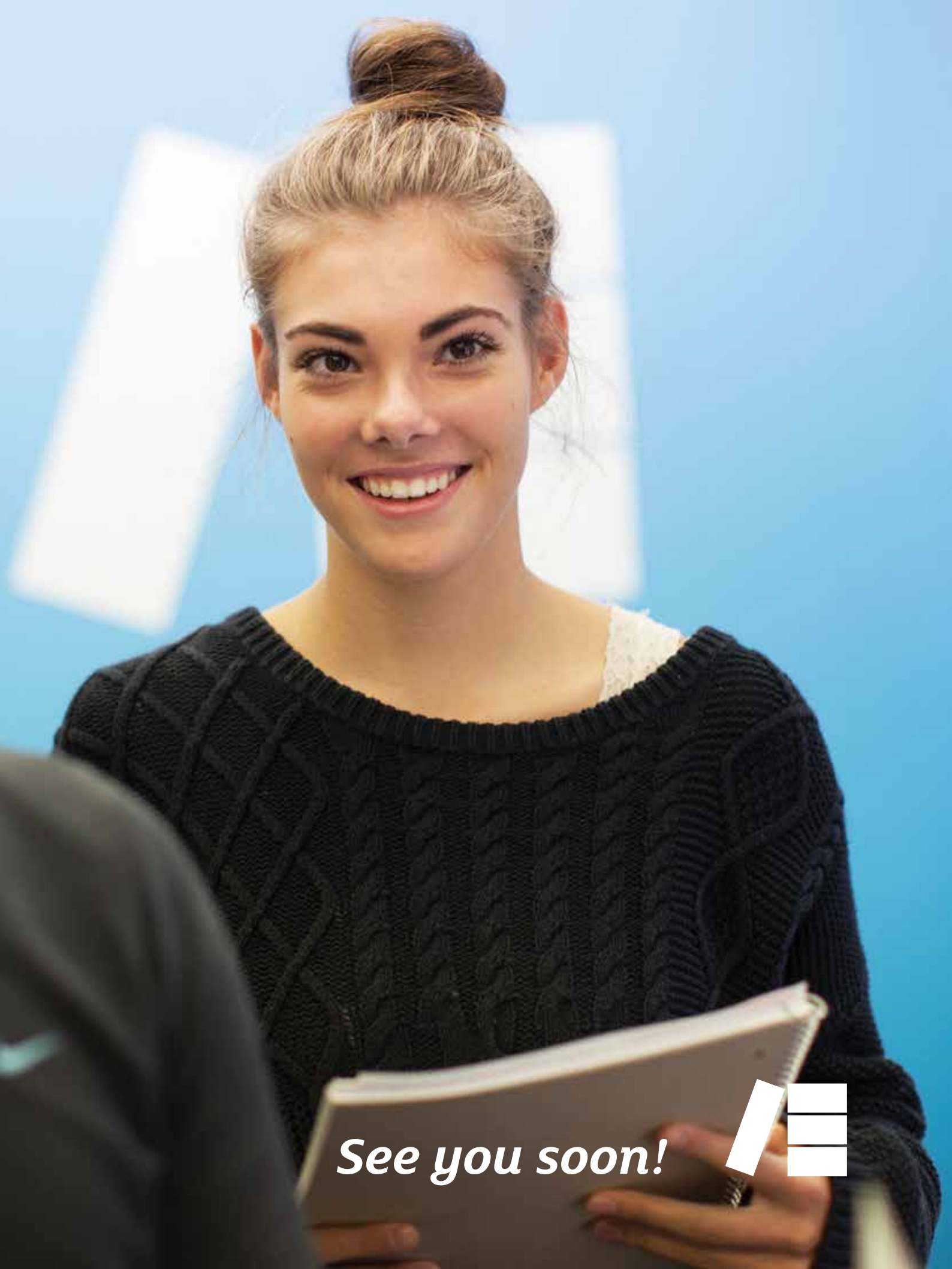
Patricia & Ana Milena Gongora,  
Colombia

*"When looking for a place to study English in Australia, I was recommended ELC as one of the best schools in Sydney and I'm sure it was the best choice to make.*

*The location is very convenient and even from the first day, the staff were always very helpful, supporting us with handy information and a very efficient service. The facilities are very comfortable for studying and relaxing, and all the classrooms have the technology and the space needed. I also love the social and cultural activities, in which teachers and students can share and learn together in a fun way.*

*You'll find very qualified teachers who are well aware of your individual needs and help you improve your skills. I was given very detailed feedback on my performance and helpful strategies to work in class and at home. The lessons were demanding and enriching, and all students in the class were given the chance to participate.*

*I really enjoyed my experience in school these six months and found it very enriching."*



*See you soon!*





**English  
Language  
Company**

*English made easy*



## Sydney

495 Kent Street, Sydney

NSW 2000 Australia

t. +61 2 9267 5688

f. +61 2 9267 5822

e. [info@elc.edu.au](mailto:info@elc.edu.au)

[www.elc.edu.au](http://www.elc.edu.au)

## Get Social

**#ELCSYDNEY**

 [/englishlanguagecompany](#)

 [@ELCSydney](#)

 [/englishlanguagecompany](#)

